

The **REPLAY RENOVATE** process involves the opening of the surface's synthetic fibres and the de-compaction of the lower level infill, as required.



BEFORE



DURING



AFTER

Through Replay's **free health check**, the synthetic surface is **inspected & recommendations** made based on the findings.

Specialist machinery is used to **open up the carpet fibres, fully decompact** the lower level infill & **strip vegetation**.

New infill may be applied, this may look heavy on the surface but it will be 'bedded-in' through play and brushing.



Moss and vegetation could be **contaminating** the surface.

Fibres are flattened & the performance sports sand is **compacted** at a lower level.

Using our **RENOVATE** process, we **remove surface debris** and vegetation.

The **fibres are decompacted** and the top layer is opened up.

The fibres are returned to upright, **new performance sports sand** is applied (if required)* **Improving** the **shock absorption & play dynamics** of the surface.



CONTACT OUR SALES TEAM.
sales@replaymaintenance.co.uk
(01636) 640 506
replaymaintenance.co.uk

The **REPLAY RENOVATE** process involves the opening of the surface's synthetic fibres and the de-compaction of the lower level infill, as required.



BEFORE



DURING



AFTER

Through **Replay's free health check**, the synthetic surface is **inspected & recommendations** made based on the findings.

Specialist machinery is used to **open up the carpet fibres**, fully **decompact the lower level infill** & strip vegetation.

New infill may be applied, this may look heavy on the surface but it will be 'bedded-in' through play and brushing.



Moss and vegetation could be **contaminating** the surface.

Fibres are flattened & the performance sports **sand is compacted** at a lower level.



Using our **RENOVATE** process, we **remove surface debris** and vegetation.

The fibres are decompacted and the top layer is opened up. In turn, this decompacts the sand infill.



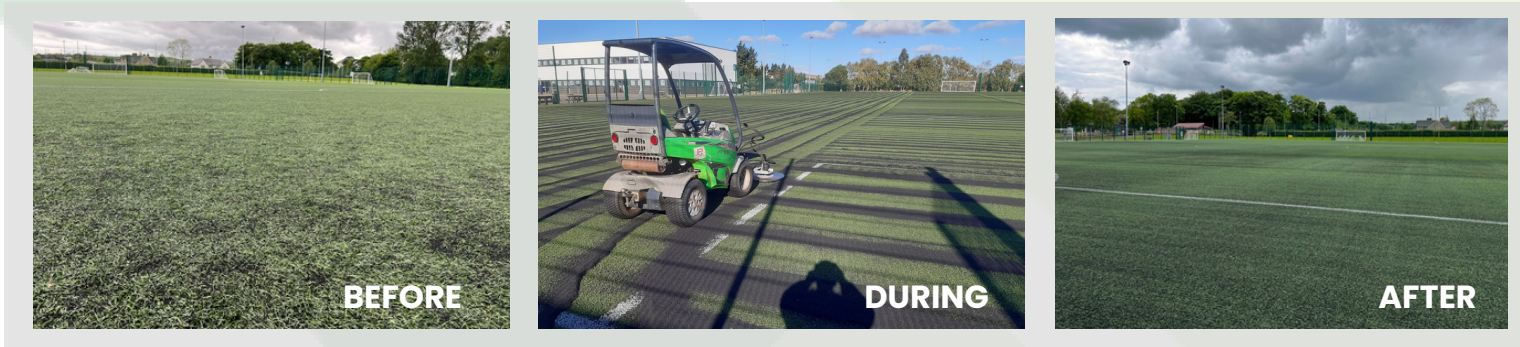
The fibres are returned to upright, new performance sports sand is applied (if required)*

Improving the shock absorption and playability of the surface.



CONTACT OUR SALES TEAM.
sales@replaymaintenance.co.uk
(01636) 640 506
replaymaintenance.co.uk

The **REPLAY RENOVATE** process involves the opening of the surface's synthetic fibres and the de-compaction of the lower level infill, as required.



Through Replay's free health check, the synthetic surface is inspected & recommendations made based on the findings.

Specialist machinery is used to open up the carpet fibres, fully decompact the lower level infill & strip vegetation.

New infill may be applied, this may look heavy on the surface but it will be 'bedded-in' through play and brushing.



Moss and vegetation could be contaminating the surface.

Using our **RENOVATE** process, we remove surface debris and vegetation.

The fibres are returned to upright, new rubber infill is applied (if required)*

Fibres are flattened and the performance sports sand is compacted at a lower level.

The fibres are decompacted and the top layer is opened up. In turn, this decompacts the rubber infill.

Improving the shock absorption and playability of the surface.

PROTECT YOUR INVESTMENT WITH RELAY REVIVE

- Service Agreements **BIG** benefits made up of;
- Discounts on standard packages

- Fixed Price
- Full Annual pitch assessment

- Free Moss treatments
- Re-stick repairs



CONTACT OUR SALES TEAM
sales@replaymaintenance.co.uk
 (01636) 640 506
replaymaintenance.co.uk